



**Julianalaan 166
2051 JW Overveen**

€ 3.650 p.m. ex.

Price	€ 3.650 p.m. ex.
Zipcode	2051 JW
Location	In residential area
Type	Terraced house
Garden	Yes, Frontyard, West, 700×1500cm
Living Surface	217m ²
Plot Surface	249m ²
Volume	841m ³
Rooms	5
Acceptance	Directly
Build Type	Existing
City	Overveen
Address	Julianalaan 166
Construction Year	1927

This magnificent, characteristic and spacious townhouse with 5 bedrooms is offered to let unfurnished and newly painted throughout. The property is located in the popular and child-friendly village of 'Overveen' just on the border of Haarlem, the NS stations of both the bustling city of Haarlem and of Overveen with its cozy restaurants and boutique shops are within walking distance. The property is close to various sports facilities, schools in primary and secondary and higher education; Including good access to the international schools, ISH and 21st century Global school, the beach of Bloemendaal / Zandvoort and nature reserve Kennemerduinen National Park can be reached by bike within a few minutes. The property has two private parking spaces in the front garden.

Layout:

Ground floor: Large central hall with staircase and toilet. A beautiful and very spacious living room with high ornate ceilings, wooden floors and many authentic details. Access via French doors to the sunny back garden (with shed) from the living room and via door from kitchen. The modern kitchen has built-in appliances such as a dishwasher, refrigerator, oven with 5-burner gas hob.

First floor: two spacious bedrooms, both with built-in closets, the master to the rear offering a large balcony overlooking the garden. On this floor the 3rd bedroom is currently in use as walk in closet, could be used as a baby room or as a work / study room. The luxurious bathroom offers a bath, sink, separate shower and bidet. Separate toilet.

Second floor: 3 further spacious bedrooms plus a separate laundry room with connection for washing machine and dryer.

Particularities:

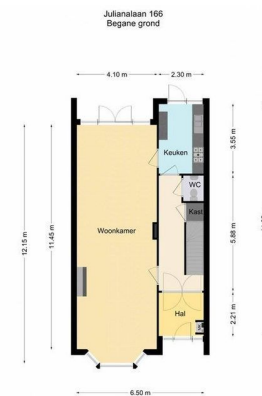
- Living area 217m²;
- Property is offered to let unfurnished;
- Air conditioning units in master and top floor bedrooms;
- Very convenient location with all the shops and restaurants of Overveen and Haarlem within walking distance;
- Rental price is exclusive of gas, water, electricity, TV/Internet and local taxes;
- Parking for a number of cars (2-3 max) on the driveway at the front of the house;
- Landlord retains right of refusal.

Lighthouse Property Services, expertly guiding you towards your new home.



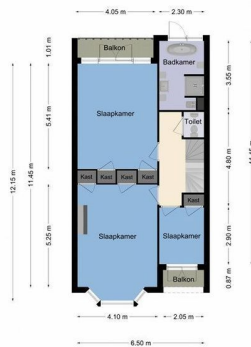






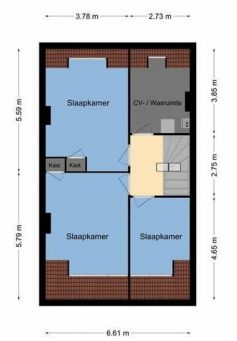
Deze plattegrond is met de meeste zorg samengesteld. Er kunnen geen rechten aan worden ontleend. © 2020/2021

Julianalaan 166
1e verdieping



Deze plattegrond is met de meeste zorg samengesteld. Er kunnen geen rechten aan worden ontleend. ©iChizeling 2020

Julianalaan 166
2e verdieping



Deze plattegrond is met de meeste zorg samengesteld. Er kunnen geen rechten aan worden ontleend. ©iChizeling 2020

Julianalaan 166
Situatie



Deze plattegrond is met de meeste zorg samengesteld. Er kunnen geen rechten aan worden ontleend. ©iChizeling 2020